



# TANDBERG Management Suite

The TANDBERG Management Suite (TMS) makes it easy for administrators to manage and maintain their entire video network and schedule video meetings. The centralized system reduces costs and saves time by delivering real-time information and powerful diagnostics.

#### DESIGN FEATURES

- Web-based software
- Built on the Microsoft® .NET Framework for security and reliability
- Intuitive user interface
- Conference control center with complete conference details on one page

#### APPLICATION FEATURES

- Detailed system-by-system and conference-by-conference records
- Intelligent diagnostics for rapid support response
- Scheduling of video, audio, web and data conferences
- Ability to schedule conferences, book rooms and invite participants using Microsoft Outlook® or IBM Lotus Notes® (requires software option)
- Supports TANDBERG Instant Messenger software option

#### PERFORMANCE FEATURES

- Manages on-site and remote video systems
- Manages scheduled calls and TANDBERG-IM initiated ad-hoc calls
- Supports management of network and video equipment from multiple vendors
- Manages calls made on multiple protocols (IP, ISDN and mixed calls)
- Manages endpoints, MCUs, gatekeepers and gateways directly
- Supports multiple servers for improved uptime

## MANAGEMENT

### CONFERENCE CONTROL CENTER

Complete conference overview on one screen  
Conference and participant connection control  
Conference-by-conference and system-by-system information

### SYSTEM UPGRADES

Pre-scheduled or ad-hoc software updates  
Release key import and export

### REMOTE SYSTEM CONTROL

Initiate, extend and terminate conferences  
Change video layouts  
Volume control and audio mute / unmute  
Microphone on / off  
Edit local phone books  
Send messages to systems  
Detect illegal system configurations

### INTELLIGENT DIAGNOSTICS

Diagnostic messages and solution suggestions  
System status, gatekeeper status, SNMP configuration,  
ISDN/IP configuration and information

### PHONE BOOK SERVICES

H.350 support (import and export)  
Active Directory support  
Centrally-managed server phone books  
Creation of one or multiple phone books  
Search unlimited entries  
Automatic directory import from gatekeeper, ILS and LDAP  
(single or multiple source)  
Directory export to ILS  
E.164 dialing support  
Create, edit, import and export phone books  
Automatic application of national and international  
dialing rules  
Automatic identification of ISDN / IP numbers  
Automatic insertion of gateway (GW) prefix, area codes and  
country codes

### ACCOUNT MANAGEMENT, SECURITY AND PERMISSIONS

FTP audit log from TANDBERG endpoints and MCUs  
Creation and management of user database  
Definition and management of user profiles  
Multiple security permissions  
Single sign-on authentication of users using  
Windows® authentication

### TEMPLATES / PROVISIONING

Customized template creation, management and  
distribution to systems  
Selectable audio, video, network and bandwidth settings

### BACKUP

Backup system settings  
Restore lost settings

### MONITORING

#### MAP MONITOR

Map monitor with graphic display  
Customizable background images  
Graphical display of call- and system status

#### EVENT NOTIFICATION

E-mail notification to individuals or groups  
Event logging including boot, link down / up, connect  
error, call connected/disconnected, lost response /  
got response, Downspeeding, upgrade start / finish,  
scheduling, gatekeeper registration, low battery, wrong  
password alert, authorization failed

#### BILLING INFORMATION

Billing or Account codes for scheduling  
Full Call Detail Records including Billing or Account  
codes for cost analysis or accounting

#### CALL DETAIL RECORDS (CDR) AND STATISTICS

Call detail records on screen or in native Excel format  
Graphical display of call detail data  
Number of incoming and outgoing calls  
ROI – calculator  
Call date and duration  
Bandwidth usage  
Network type  
Number / address called  
Statistics in data, graph and chart format  
Number of scheduled conferences per person  
Network, gatekeeper and ISDN interface  
Authentication failure  
Error statistics  
Battery status

#### CALL ROUTING

Automatic call routing on IP and ISDN  
Least cost call routing on IP and ISDN  
Automatic MCU, gateway and network selection  
Supports MCU cascading

## SCHEDULING AND BOOKING

### SYSTEM BOOKING

Book system and meeting room simultaneously  
Create, edit or delete booked conferences or  
recurring meetings  
Add web or data conference to meetings  
Add / remove participants from reservation or connect /  
disconnect participants during conferences  
Connect conferences ad-hoc or pre-schedule connection  
Reserve resources for dial-in participants (telephone or  
video on ISDN or IP)  
Schedule point-to-point conferences or bridged meetings  
Lock conference, preventing new participants from joining  
Invite participants by e-mail  
Customize meeting names

### SCHEDULE OVERVIEW

Overview of scheduled meetings, resources and participants  
Real-time overview of meeting status

### WEB AND DATA CONFERENCING

Integrated scheduling of WebEx conferences  
with video system booking  
Create a data conference for participants to share  
applications and edit documents (requires TANDBERG  
See&Share or WebEx)  
An e-mail invitation is generated, enabling conference  
participants to link to the web conference

### INTEGRATION WITH MICROSOFT EXCHANGE SERVER

Ability to schedule conferences, book rooms  
and invite participants using Microsoft Outlook  
Requires Microsoft Exchange Server 2000 or 2003

### INTEGRATION WITH IBM LOTUS DOMINO SERVER

Ability to schedule conferences, book rooms and invite  
participants using IBM Lotus Notes  
Requires IBM Lotus Domino Server V6.x running  
on Microsoft Windows

## REQUIREMENTS

### TMS SERVER REQUIREMENTS

512 MB RAM  
Pentium 1GHz or higher Pentium compatible CPU  
Microsoft Windows 2000 or 2003 Server running the  
latest Service Packs with Internet Information Services

### TMS CLIENT REQUIREMENTS

Internet Explorer 5.5 or higher

### SEE&SHARE SERVER REQUIREMENTS (IF INSTALLING SEE&SHARE OPTION)

Pentium I 500 MHz  
Windows 2000 operating system or Windows XP  
operating system  
256 MB RAM  
20 MB of available disk space for services

### SEE&SHARE CLIENT REQUIREMENTS

Internet Explorer 5.5 or higher

### WEBEX CLIENT REQUIREMENTS

Please see [www.webex.com](http://www.webex.com)

## SOFTWARE OPTIONS

### TMS NETWORK INTEGRATION PACKAGE

Supports integration with:  
Cisco IP/VC 3540  
Polycom® MGC (Accord) MCU  
RADVISION via IP MCU

### TMS APPLICATION INTEGRATION PACKAGE

Supports integration with Microsoft Exchange, IBM Lotus  
Domino or custom built integration towards 3rd party server

### TMS CLIENT SOLUTION PACKAGE

Includes TANDBERG Scheduler and TANDBERG  
Instant Messenger

*All specifications subject to change without notice.*

*TANDBERG is a registered trademark or trademark of  
TANDBERG in the U.S. and other countries.*

*Microsoft, Outlook and Windows are either registered  
trademarks or trademarks of Microsoft Corporation in  
the United States and/or other countries.*

*Lotus and Domino are trademarks or registered trademarks of  
Lotus Development Corporation.*

*IBM is a trademark of International Business Machines  
Corporation in the United States, other countries, or both.*

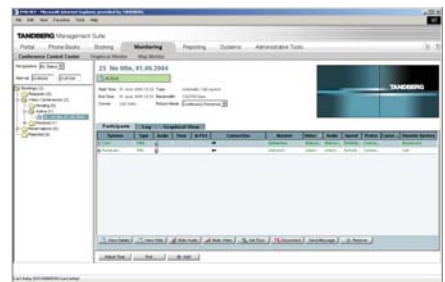
*Polycom is a registered trademark of Polycom in the U.S.  
and various countries.*

*WebEx is a trademark of WebEx Communications, Inc.*

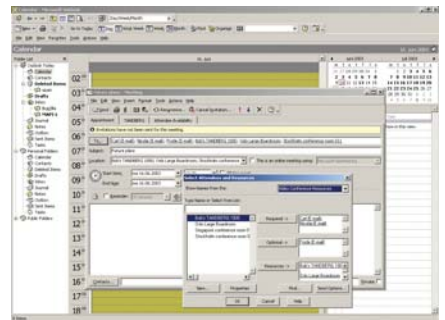
*All other trademarks are property of their respective owners.*



The TMS portal displays a single-page overview of the video network.



Conference Control Center provides complete overview and control of video, audio and data conferences.



Integration with Microsoft Outlook or Lotus Notes makes it easy for everyone to schedule meetings from their own PC.

## TANDBERG

# Management Suite

TANDBERG WORLD HEADQUARTERS  
Philip Pedersens vei 22  
1366 Lysaker, Norway  
Tel: +47 67 125 125  
Fax: +47 67 125 234  
Video: +47 67 117 777  
E-mail: [tandberg@tandberg.net](mailto:tandberg@tandberg.net)

200 Park Avenue, Suite 2005  
New York, NY U.S.A. 10166  
Tel: +1 212 692 6500  
Tel: +1 800 538 2884 (toll free in the U.S.)  
Fax: +1 212 692 6501  
Video: +1 212 692 6535  
E-mail: [tandberg@tandbergusa.com](mailto:tandberg@tandbergusa.com)

July 2004