



# TANDBERG Instant Messenger

Video communication is faster and more easily accessible with TANDBERG Instant Messenger (IM). Reaching beyond text-based IM, TANDBERG IM allows users to initiate chat, video, voice and web communications with one click.

#### DESIGN FEATURES

- Simple, intuitive user interface
- Similar to commonly used IM software
- One click communication for even the most novice users

#### APPLICATION FEATURES

- Integrates chat, web conferencing, voice and business quality video into one simple tool
- Controls presence and availability of both people and communications resources such as video systems
- Allows users to share meeting room video systems, and include these systems in ad-hoc communication sessions started with one click

#### PERFORMANCE FEATURES

- Secure manageable communication using Microsoft Live Communication Server
- Enables encrypted communication, secure identity, and auditing
- Shows real time presence and availability of people and video resources

#### SIMPLE AND POWERFUL USER INTERFACE

Graphical interface, one click to connect  
Easy overview with color coding of Buddies' presence and video resource availability.

#### MULTIMEDIA IM ENVIRONMENT

Text chat to Microsoft Live Communication Server and MSN chat community  
Voice calls to fixed and mobile phones  
Data conferencing using TANDBERG See&Share and WebEx®  
Video communication with all types of equipment supported using TANDBERG TMS, which includes Polycom, Aethra, Sony (see TANDBERG TMS specification for details)

#### LETS USERS DECIDE HOW BEST TO BE REACHED

Choice of cellular or fixed line as primary point of contact for audio calls  
Choice of video system for incoming video calls

#### PRESENCE AND AVAILABILITY FUNCTIONALITY INCLUDES BOTH PEOPLE AND VIDEO EQUIPMENT

Shows availability of people using common IM mechanisms  
Allows users to select primary video system, which can be shared  
Shows availability for people and communication resource, combined

#### DIRECTORY FUNCTION WHICH SUPPORTS

**SHARING OF BUDDY LISTS**  
Easy to add users from the TMS directory

#### RESOURCE MANAGEMENT

Takes into account scheduled meetings on shared video equipment  
Uses TMS functions for Advanced Routing, Booking and Scheduling, and Conference Management

#### SYSTEM REQUIREMENTS

Microsoft® Windows® 2000 or XP  
TMS version 9 or higher

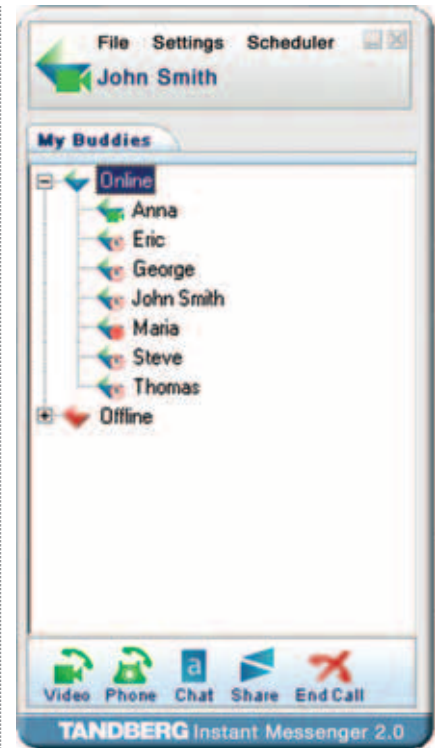
*All specifications subject to change without notice.*

*TANDBERG is a registered trademark or trademark of TANDBERG in the U.S. and other countries.*

*Microsoft, Outlook and Windows are either registered trademarks or trademarks of Microsoft Corporation in the United States and/or other countries.*

*WebEx is a trademark of WebEx Communications, Inc.*

*All other trademarks are property of their respective owners.*



A tool for ad-hoc multimedia communication.

## TANDBERG

# Instant Messenger

TANDBERG WORLD HEADQUARTERS  
Philip Pedersens vei 22  
1366 Lysaker, Norway  
Tel: +47 67 125 125  
Fax: +47 67 125 234  
Video: +47 67 117 777  
E-mail: tandberg@tandberg.net

200 Park Avenue, Suite 2005  
New York, NY U.S.A. 10166  
Tel: +1 212 692 6500  
Tel: +1 800 538 2884 (toll free in the U.S.)  
Fax: +1 212 692 6501  
Video: +1 212 692 6535  
E-mail: tandberg@tandbergusa.com

June 2004