

HiPath 3000/5000 Manager C

Customer Administration Program for Real Time IP Systems HiPath 3000 and HiPath 5000

HiPath 3000/5000 Manager C enables to perform standard administration tasks to HiPath 3000 or HiPath 5000 Real Time IP Systems without external assistance.

SIEMENS

Global network of innovation

This Windows-based application helps to manage data, such as:

- Subscriber names
- Key programming on the telephone
- Speed dialing destinations and numbers
- Authorizations for subscribers and lines
- Hunt group/group call
- Call pickup groups
- Forwarding destinations
- Display texts
- Call charge tariffs/account codes

Processed data can be saved or printed out. Multiple communication systems can be administered in networks. Furthermore, the administration program supports a number of languages.

No special know-how is required for using this application.

Features

The HiPath 3000/5000 Manager C application program allows to administer, save and print the following customer data:

- optiPoint 400/500/600, optiset E
 - key beep on/off
- Key programming
 - programming freely assignable keys on the system telephone and key modules
- Subscribers
 - names (up to 16 characters)
 - authorizations for features, such as: external call forwarding override
DISA authorisations
- Telephone lock
 - telephone lock code (5 digits)
 - PIN code for Cordless users
- Display language
 - language per station
- Attendant console
 - max. number of queued calls
- Hotline
 - type
 - hotline destinations
- Numbering plan
 - defining the internal call number

- Account codes
 - ACCT input
 - type of check
- Call pickup
 - defining stations in the call pickup groups
- Call forwarding destinations for stations and groups
- Configuration of groups and hunt groups
- Trunk access assignment and modification
- System speed dialing
 - input, modification, deletion of destinations (max. 27 digits)
 - input of names for destinations
- Advisory/text messages
 - editing system texts
- Call charge data format
 - call charge multiplier
 - currency format
- Call charges
 - call charge prompt per subscriber/line
 - printout
 - export to file
- Languages for the user interface
 - German
 - English
 - French
 - Italian
 - Spanish
 - Portuguese
 - Dutch
 - Danish
 - Swedish
 - Finnish
 - Polish
 - Hungarian
 - Russian
 - Greek

Technical Data

Hardware Requirements

- Pentium PC (from 133 MHz)
Desktop or notebook
- 32 MB RAM min.
- approx. 50 MB free on hard disk
- VGA monitor (800 x 600)
- 1 unused V.24 interface,
S₀ card or network card

Required operating system

- Microsoft Windows 95/98
- Windows NT 4.0
- Windows 2000
- Windows XP

Connection to the communication platform

- Via V.24 interface
- Via S₀ interface
- TCP/IP interface
- Remote access via:
 - Analog modem (14.4 KBaud)
 - ISDN B channel (64Kbit)

Scope of delivery

The package supplied includes a CD-ROM with installation instructions in German and English

Updates

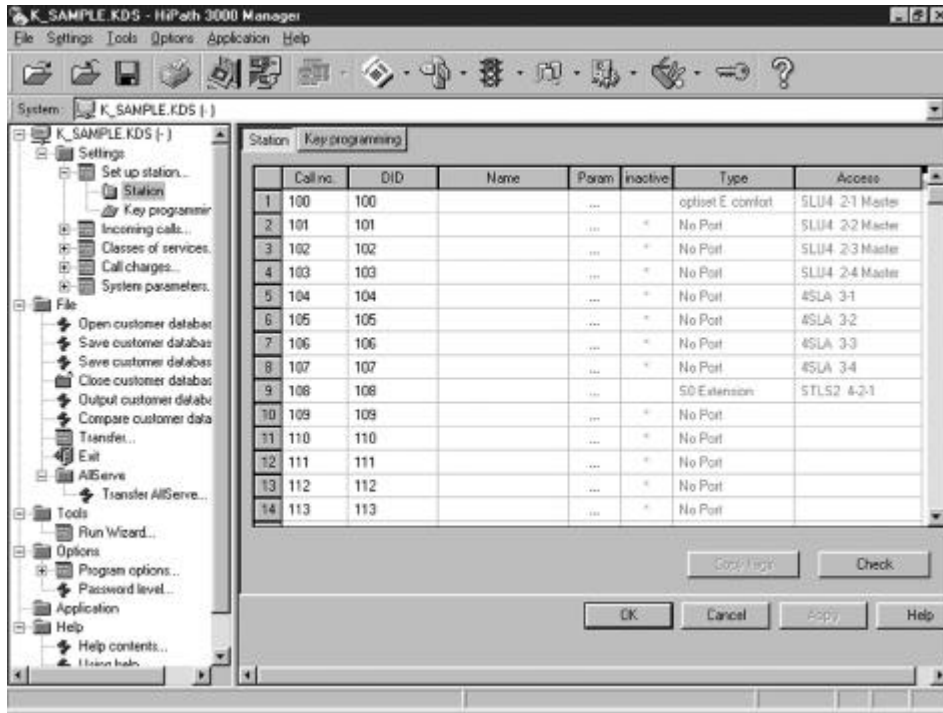
Updates are issued regularly on CD-ROM.

Compatible systems

HiPath 5000 V4.0, all HiPath 3000 models and Hicom 150 E Office and Hicom 150 H.

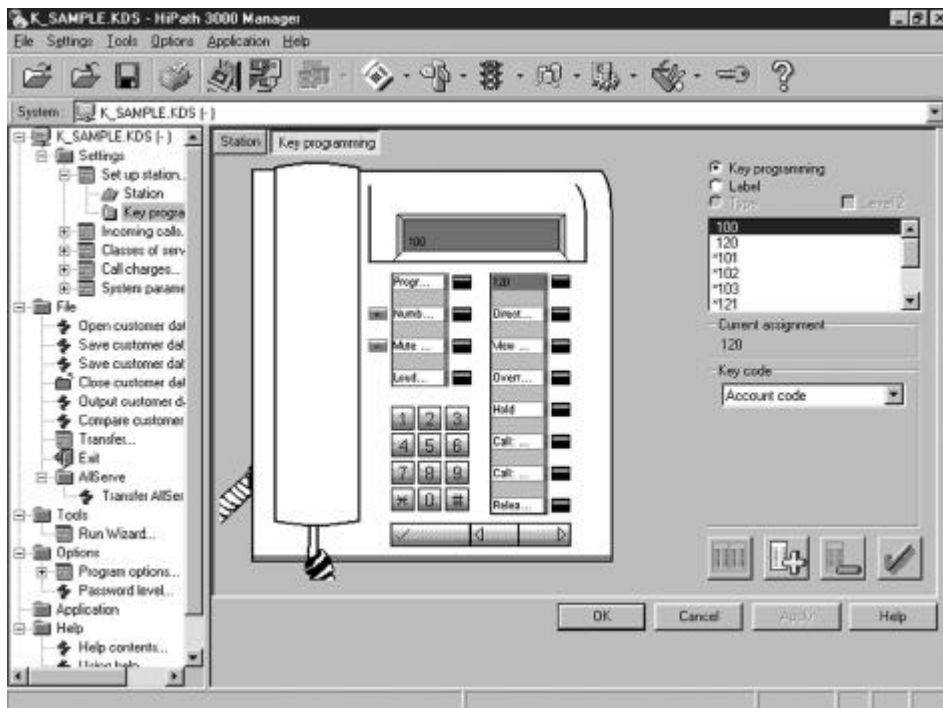
User Interface Examples

Pop-up bar and menu tree



The features can be activated rapidly and directly via the menu tree.

Key programming



Freely programmable system telephone keys can be assigned features or Destination keys.

Our strengths - Your advantages

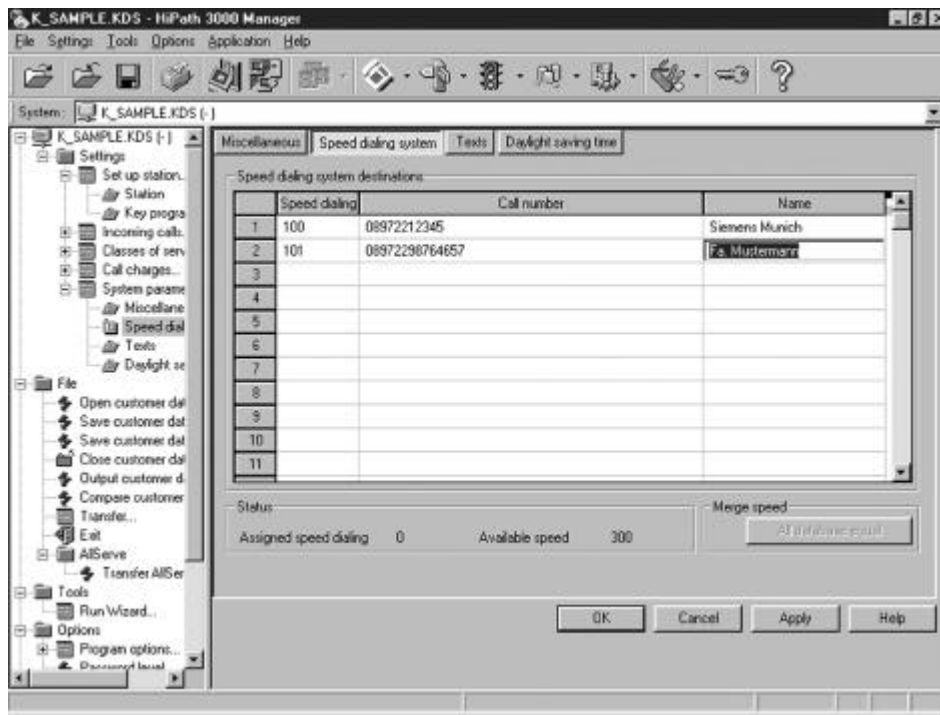
Siemens is known worldwide as a trailblazer in the advancement of information and communication technologies. No other company offers such a comprehensive and innovative product portfolio.

With the one-of-a-kind Siemens convergence architecture, HiPath, guide your customers to a secure and flexible migration into the world of innovative IP convergence solutions.

www.hipath.com

Speed dialing destinations

Enter, change, delete or name speed dialing destinations in this screen.



© Siemens AG 2002 • Information and Communication Networks • Hofmannstr. 51 • D-81359 München

Reference No.: A31002-E1300-A290-3-7629

The information provided in this document contains merely general descriptions or characteristics of performance which in case of actual use do not always apply as described or which may change as a result of further development of the products. An obligation to provide the respective characteristics shall only exist if expressly agreed in the terms of contract. Availability and technical specifications are subject to change without notice. Printed in Federal Republic of Germany.