



**Bedhead and Recreation  
Area Entertainment Units**  
Entertainment System



- **Ultra-slim - 50mm depth**
- **CE Approved**
- **Touch tune and volume adjustments**
- **Operates with wide variations in power and temperature**
- **Regulated AC-DC power supply**
- **Stereo output to headphones**
- **Reading light option**
- **Flush or surface mount option**
- **Emergency PA override option**
- **Single coaxial connection for all RF/FM inputs**
- **Headphone impedance range of 8 to 150 Ω**
- **Stereo socket size is ¼ inch**



**Bedhead Unit Design Variations**

The latest design of bedhead unit is only *50mm deep* allowing it to be flush mounted in a cavity wall without fear of impinging into a firewall protection layer.

All units include a digital clock with an alarm.

Unit options include:

Reading light, connections for external speakers, internal or external mains, headphone socket and public address (PA) override.

**Recreation Area Units**

Recreation Units for communal areas are offered with an additional amplification module to support integral or remotely mounted 5Watt wall or ceiling speakers

**RF/FM Connections**

The RF/FM connections to all variations are via a single coaxial cable

**Emergency PA Message Override**

This facility enables the operator to override all entertainment channels, and volume settings, even if the unit is switched off.

PA Override allows emergency messages from the PA System to be heard in recreation areas and sleeping quarters which could normally be isolated from the plant PA System.

This is achieved with a pilot tone of 30Hz on the FM waveband, but outside the actual tuning range of the unit. A dedicated and fixed receiver is built into the tuner and tuned to this frequency. Whilst the 30Hz is detected it allows normal operation of the Bedhead or recreational area unit/s.

The removal of this tone enables connection to the system and emergency messages are diverted to the amplifier and speaker within the unit/s at full volume.

## Bedhead and Recreation Area Entertainment Units Entertainment System

### TECHNICAL SPECIFICATIONS

**Mains Input:** 220-254V AC at 50/60Hz

**Mains Input Connector:** Via standard 3 pin IEC 320 male on 350mm lead

**Frequency Range:** 87.5 - 108 MHz FM only

**RF Input Connector:** 'F' type as std. on 200mm lead

**RF Input Impedance:** 75 Ω

**Maximum RF Input:** +6OdBmV

**Sensitivity at 50dB SINAD:** -20dBmV

**A.M. Rejection:** 45dB

**Tuning Method:** Phased locked loop (digital control), 10 presets possible with memory backup for up to 30 days

**Autoscan:** Scans the waveband in 15 seconds. Stops automatically when a strong RF signal is located

**Maximum Deviation:** 75kHz for full output

**Volume Control:** Pushbutton, digital control

**Headphone Outlet:** Stereo output, standard stereo ¼" jack. Headphone impedance 8 to 150 Ω

**Distortion to Headphone Outlet:** Typically 0.4% at 1 kHz at 75kHz deviation

**Stereo Separation:** Typically 35dB

**Loudspeaker Output:** 0.75Watts maximum (bed/office)

**Loudspeaker Output:** 2x5Watts maximum (rec. area)

**Unit Dimensions:**

420mm wide, 160mm high, 50mm deep

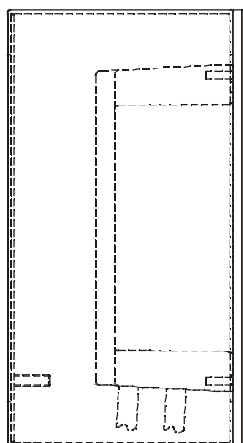
**Backbox Dimensions:** 420mm wide, 160mm high, 82mm deep, clearance 29.6mm between rear of metal box and rear of plastic box on the front plate

**Weight:** frontplate: 2.6kg, frontplate with backbox: 4.4kg

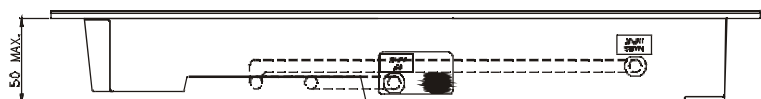
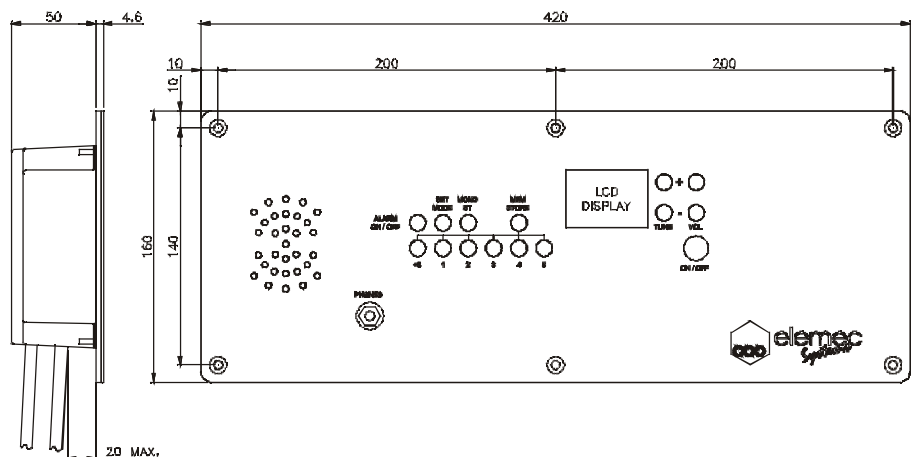
### APPROVALS

CE Approval

### DIMENSIONS



Metal backbox for surface mounting



Model shown: 097-02-0016-008

### ORDER CODE

Part Number	097-02-0016-001	097-02-0016-002	097-02-0016-003	097-02-0016-007	097-02-0016-008	097-02-0016-009
Office or Bedhead	✓	✓		✓	✓	
Recreational Area			✓			✓
Flush Mount	✓	✓	✓	✓	✓	✓
PA Override				✓	✓	✓
Light	✓			✓		
Headphones & Integral Loudspeaker	✓	✓		✓	✓	
Connections for External Speakers			✓			✓
Metal Backbox (ordered separately)	<b>Part number: 501-08-0390-001</b>					



GAI-Tronics Limited, UK - Tel: +44 (0)1283 500500 - Fax: +44 (0)1283 500400 - [www.gai-tronics.co.uk](http://www.gai-tronics.co.uk)

GAI-Tronics Corporation, USA - Tel: +(1)610 777 1374 - Toll Free: 800 492 1212 - Fax: +(1)610 775 6540 - [www.gai-tronics.com](http://www.gai-tronics.com)

GAI-Tronics S.r.l, Italy - Tel: +39 02 48601 460 - Fax: +39 02 4585 625

GAI-Tronics Corporation, Malaysia - Tel: +60 3 6277 6091 - Fax: +60 3 6277 6093

An ISO9001 Registered Company

The policy of GAI-Tronics is one of continuous improvement, therefore the company reserves the right to change specifications without notice.